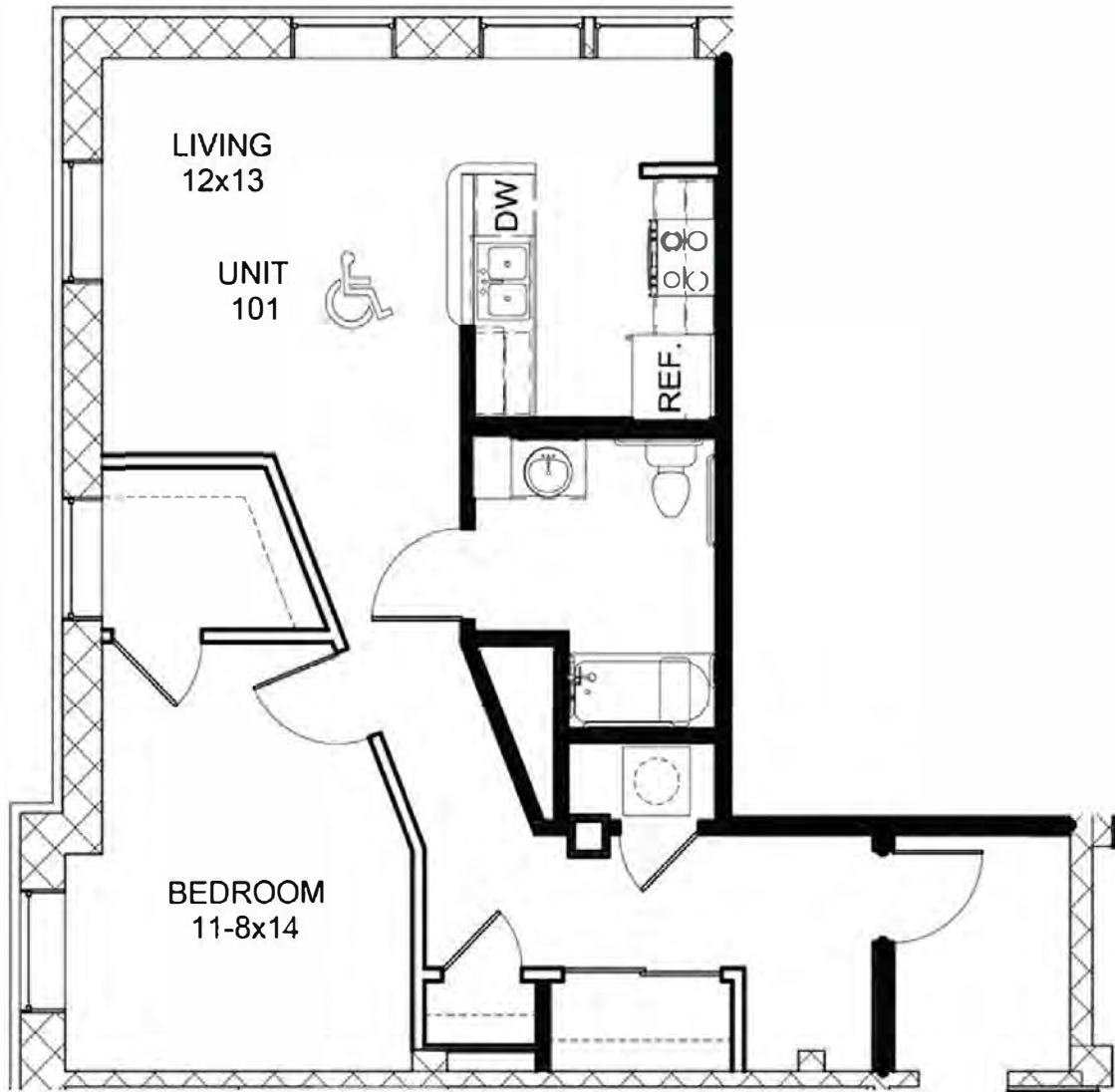




1100 W. 10th St.  
Rent: \$1,200  
Call: 781-326-1234  
www.faxonapartments.com

UNIT 101  
1 BEDROOM + 1 BATH  
733 SF

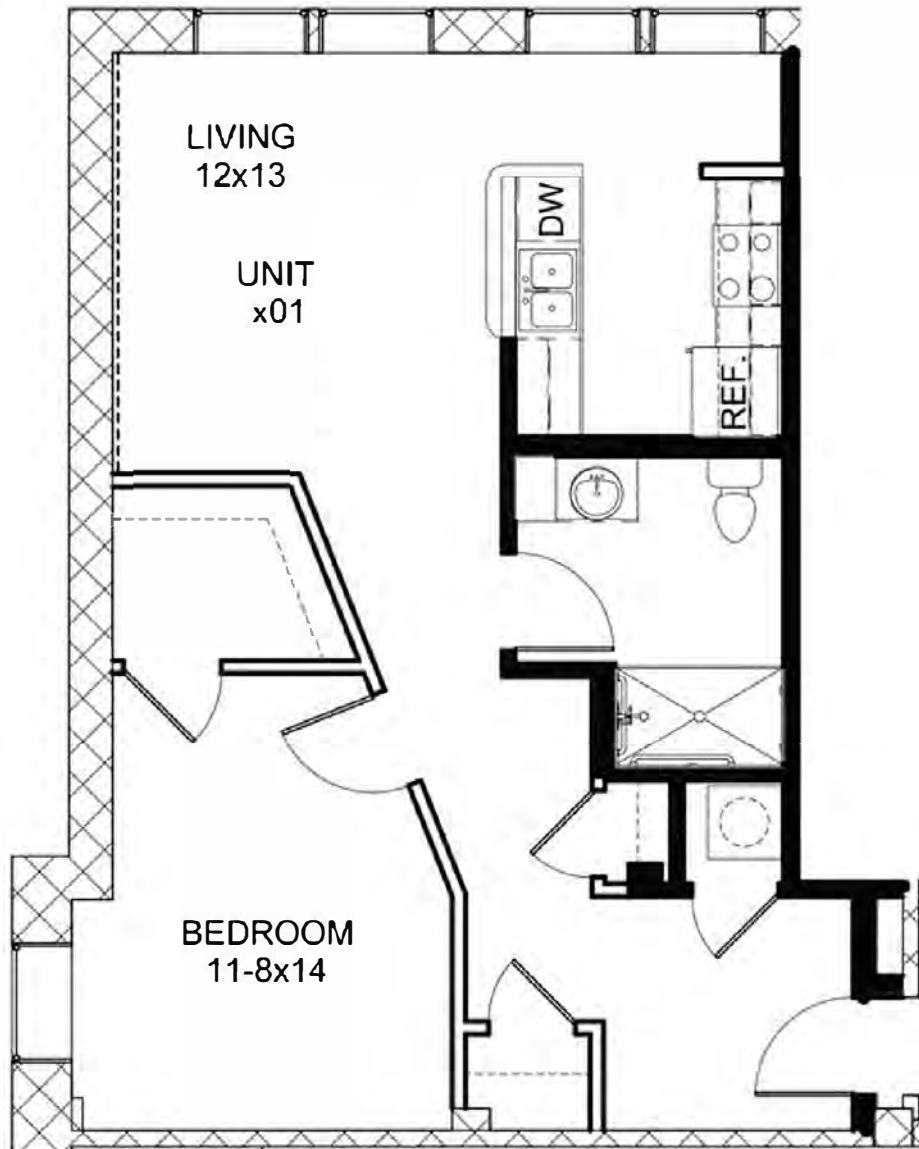


**Amenities:**

Fitness Area | Laundry Room | Community Room | Onsite Leasing Office | High Ceilings and Wood Floors throughout | Community Garden | Wheel Chair Accessible Units Available | Stone Countertops | Ceiling Fans in the Bedrooms | Dishwasher | Intercom Entry System



UNIT 201 / UNIT 301  
1 BEDROOM + 1 BATH  
676 SF



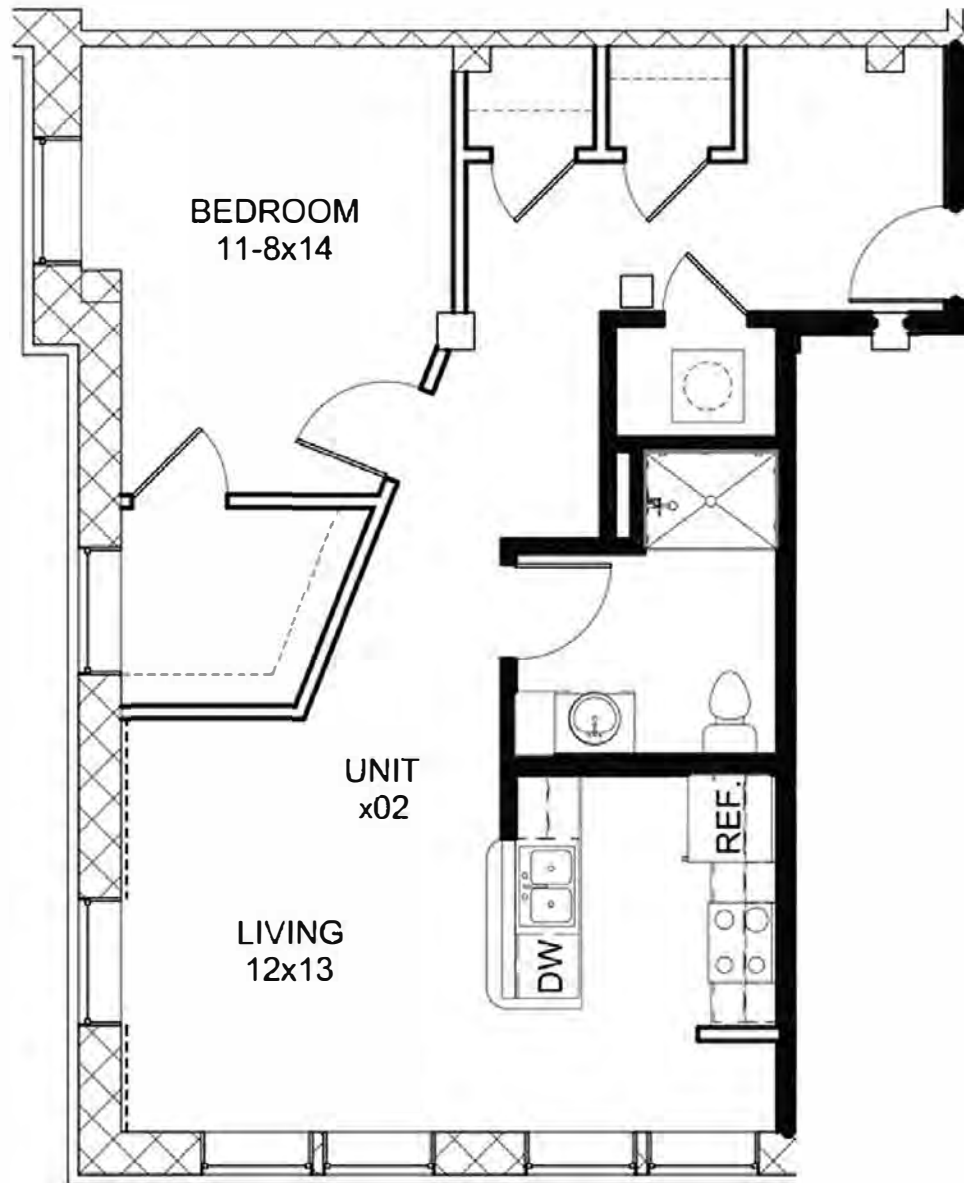
**Amenities:**

Fitness Area | Laundry Room | Community Room | Onsite Leasing Office | High Ceilings and Wood Floors throughout | Community Garden | Wheel Chair Accessible Units Available | Stone Countertops | Ceiling Fans in the Bedrooms | Dishwasher | Intercom Entry System



1100 W. 10TH AVE  
DENVER, CO 80202  
303.733.1100  
WWW.FAXONSCHOOLAPARTMENTS.COM

UNIT 102 / 202 / 302  
1 BEDROOM + 1 BATH  
758 SF / 696 SF / 696 SF

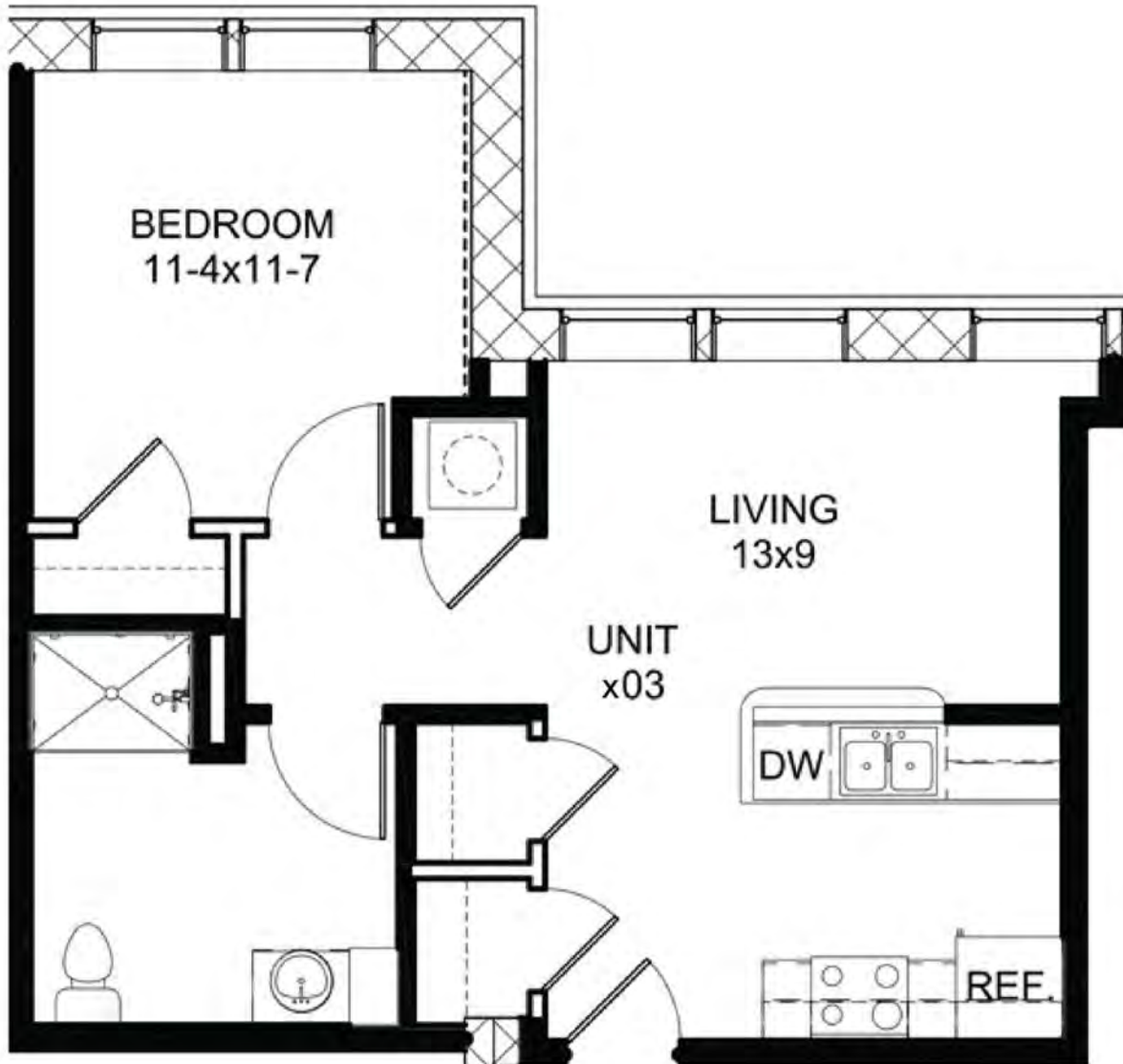


**Amenities:**

Fitness Area | Laundry Room | Community Room | Onsite Leasing Office | High Ceilings and Wood Floors throughout | Community Garden | Wheel Chair Accessible Units Available | Stone Countertops | Ceiling Fans in the Bedrooms | Dishwasher | Intercom Entry System



UNIT 103 / 203 / 303  
1 BEDROOM + 1 BATH  
560 SF / 555 SF / 555 SF



**Amenities:**

Fitness Area | Laundry Room | Community Room | Onsite Leasing Office | High Ceilings and Wood Floors throughout | Community Garden | Wheel Chair Accessible Units Available | Stone Countertops | Ceiling Fans in the Bedrooms | Dishwasher | Intercom Entry System



11-11-2024  
11-11-2024  
11-11-2024  
11-11-2024

UNIT 104 / 204 / 304  
1 BEDROOM + 1 BATH  
571 SF / 577 SF / 577 SF



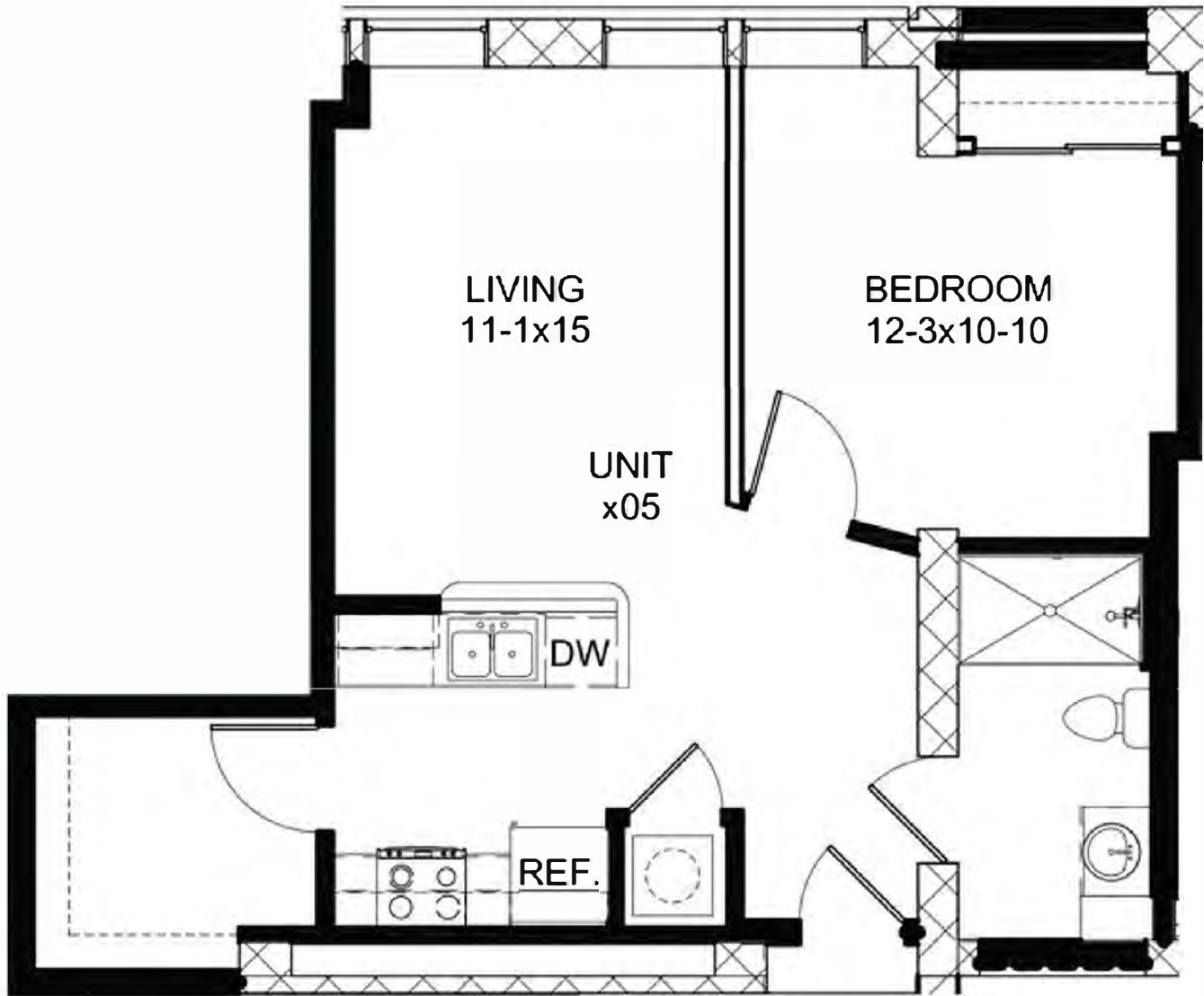
**Amenities:**

Fitness Area | Laundry Room | Community Room | Onsite Leasing Office | High Ceilings and Wood Floors throughout | Community Garden | Wheel Chair Accessible Units Available | Stone Countertops | Ceiling Fans in the Bedrooms | Dishwasher | Intercom Entry System



1150 W. 10th St.  
Anchorage, AK 99501  
907.562.1234  
www.faxonapartments.com

UNIT 105 / 205 / 305  
1 BEDROOM + 1 BATH  
637 SF / 659 SF / 659 SF

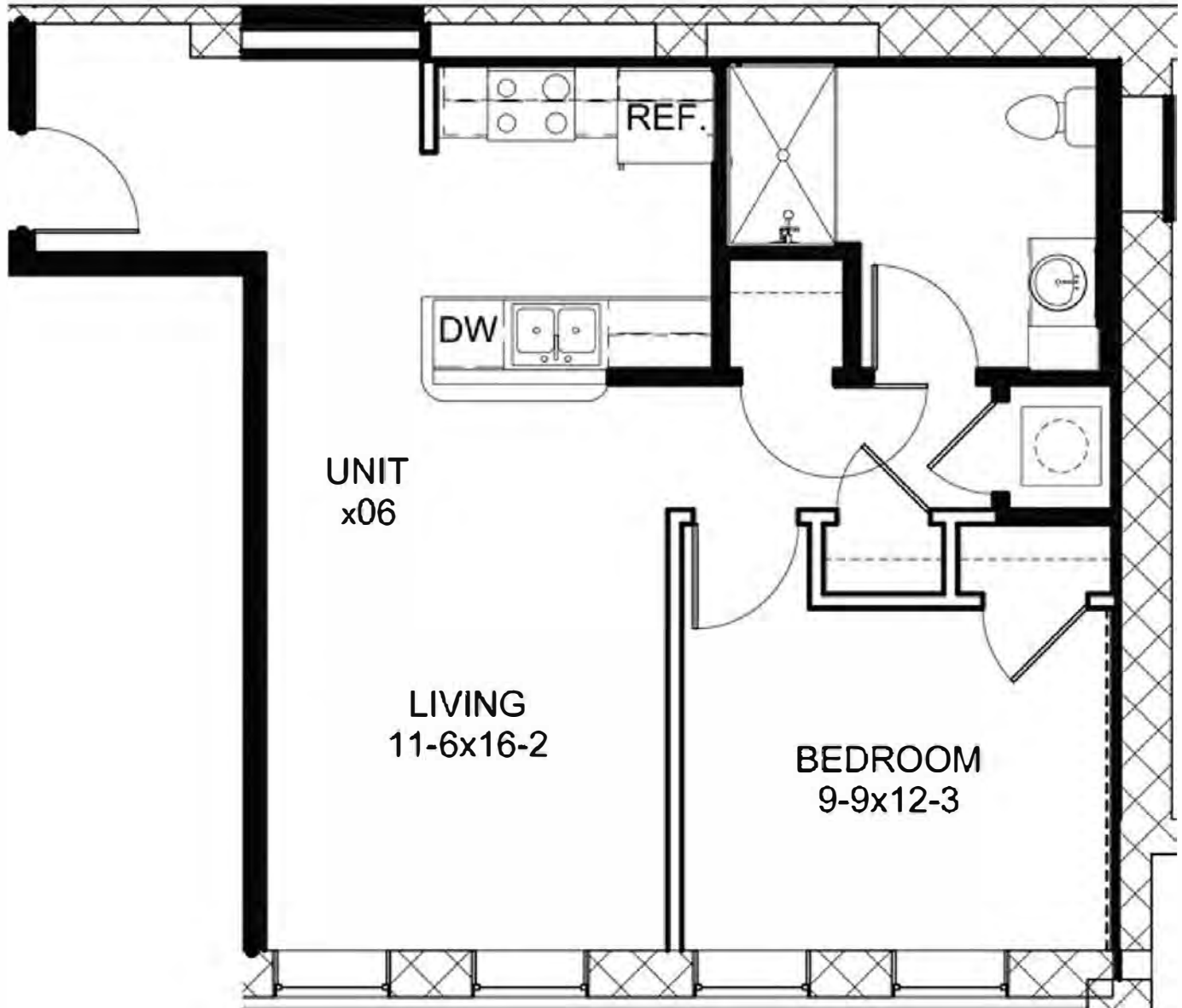


**Amenities:**

Fitness Area | Laundry Room | Community Room | Onsite Leasing Office | High Ceilings and Wood Floors throughout | Community Garden | Wheel Chair Accessible Units Available | Stone Countertops | Ceiling Fans in the Bedrooms | Dishwasher | Intercom Entry System



UNIT 106 / 206 / 306  
1 BEDROOM + 1 BATH  
658 SF / 637 SF / 637 SF

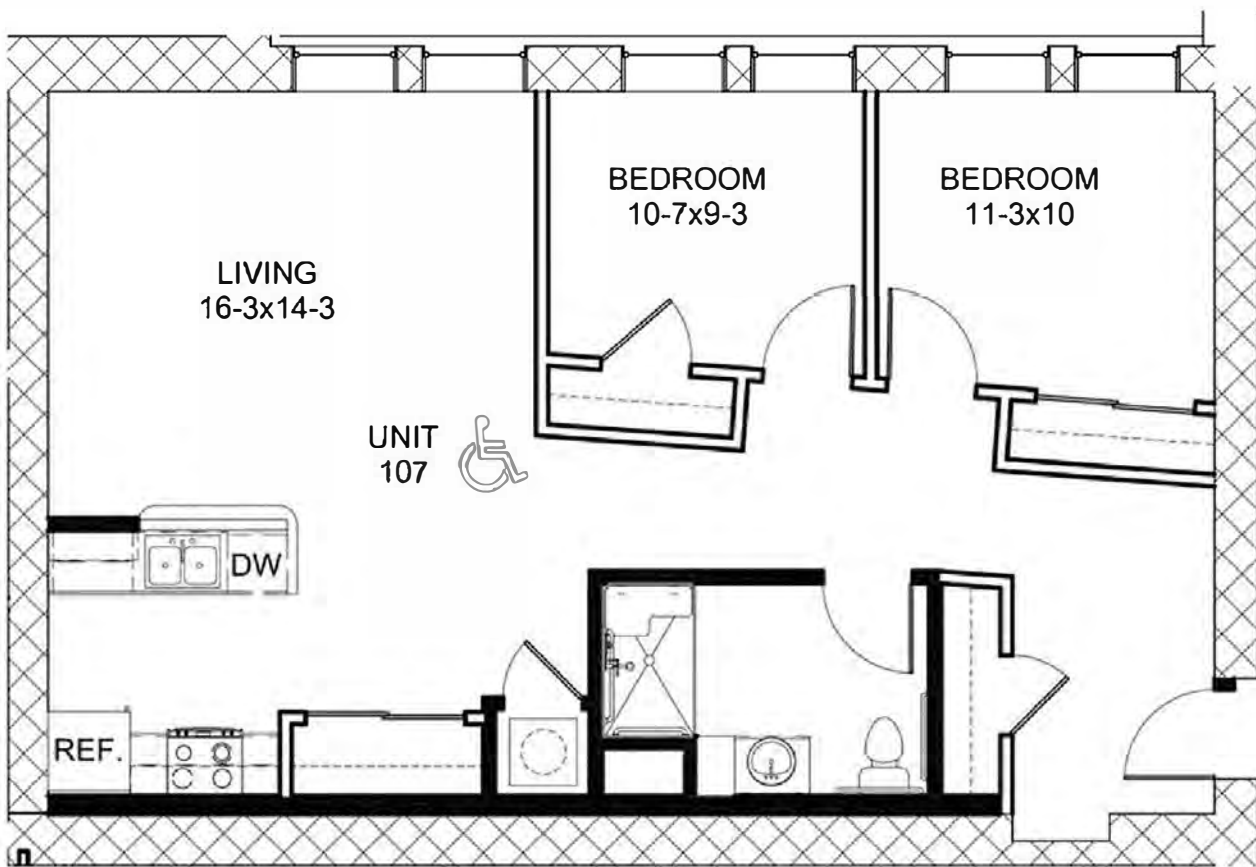


**Amenities:**

Fitness Area | Laundry Room | Community Room | Onsite Leasing Office | High Ceilings and Wood Floors throughout | Community Garden | Wheel Chair Accessible Units Available | Stone Countertops | Ceiling Fans in the Bedrooms | Dishwasher | Intercom Entry System



UNIT 107  
2 BEDROOM + 1 BATH  
929 SF



### Amenities:

Fitness Area | Laundry Room | Community Room | Onsite Leasing Office | High Ceilings and Wood Floors throughout | Community Garden | Wheel Chair Accessible Units Available | Stone Countertops | Ceiling Fans in the Bedrooms | Dishwasher | Intercom Entry System

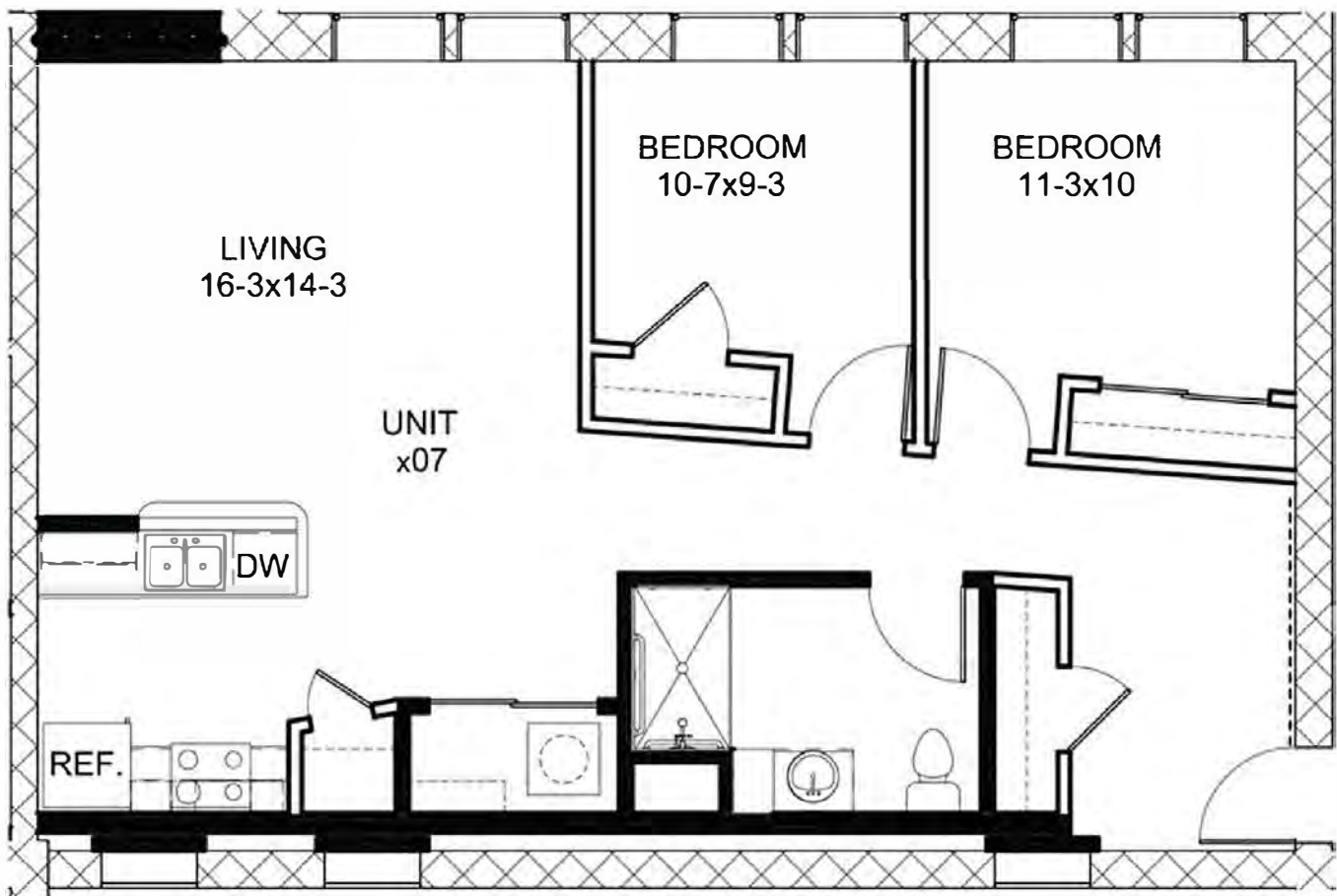




UNIT 207 / 307

2 BEDROOM + 1 BATH

929 SF / 929 SF

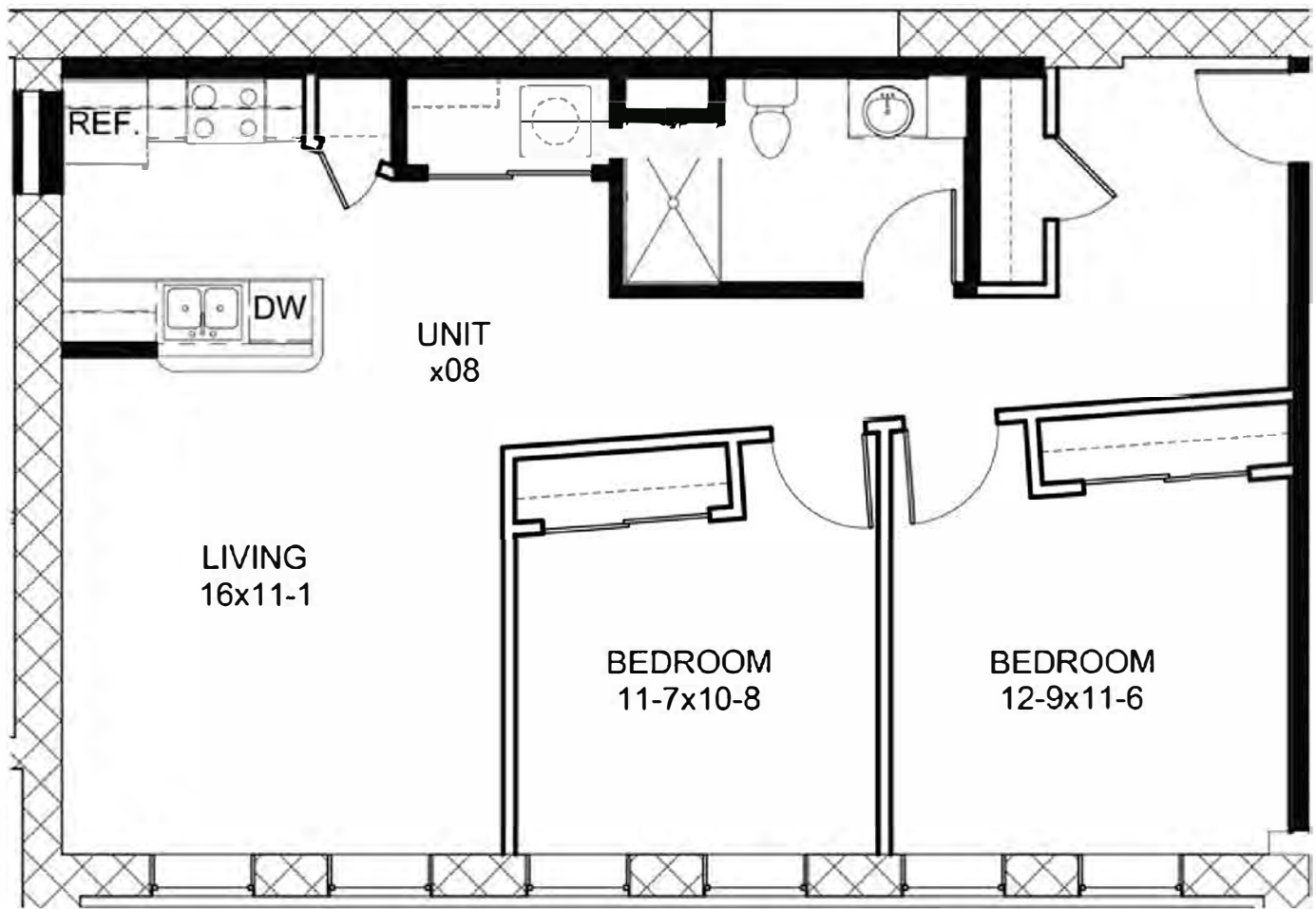


**Amenities:**

Fitness Area | Laundry Room | Community Room | Onsite Leasing Office | High Ceilings and Wood Floors throughout | Community Garden | Wheel Chair Accessible Units Available | Stone Countertops | Ceiling Fans in the Bedrooms | Dishwasher | Intercom Entry System



UNIT 108 / 208 / 308  
2 BEDROOM + 1 BATH  
984 SF / 984 SF / 984 SF



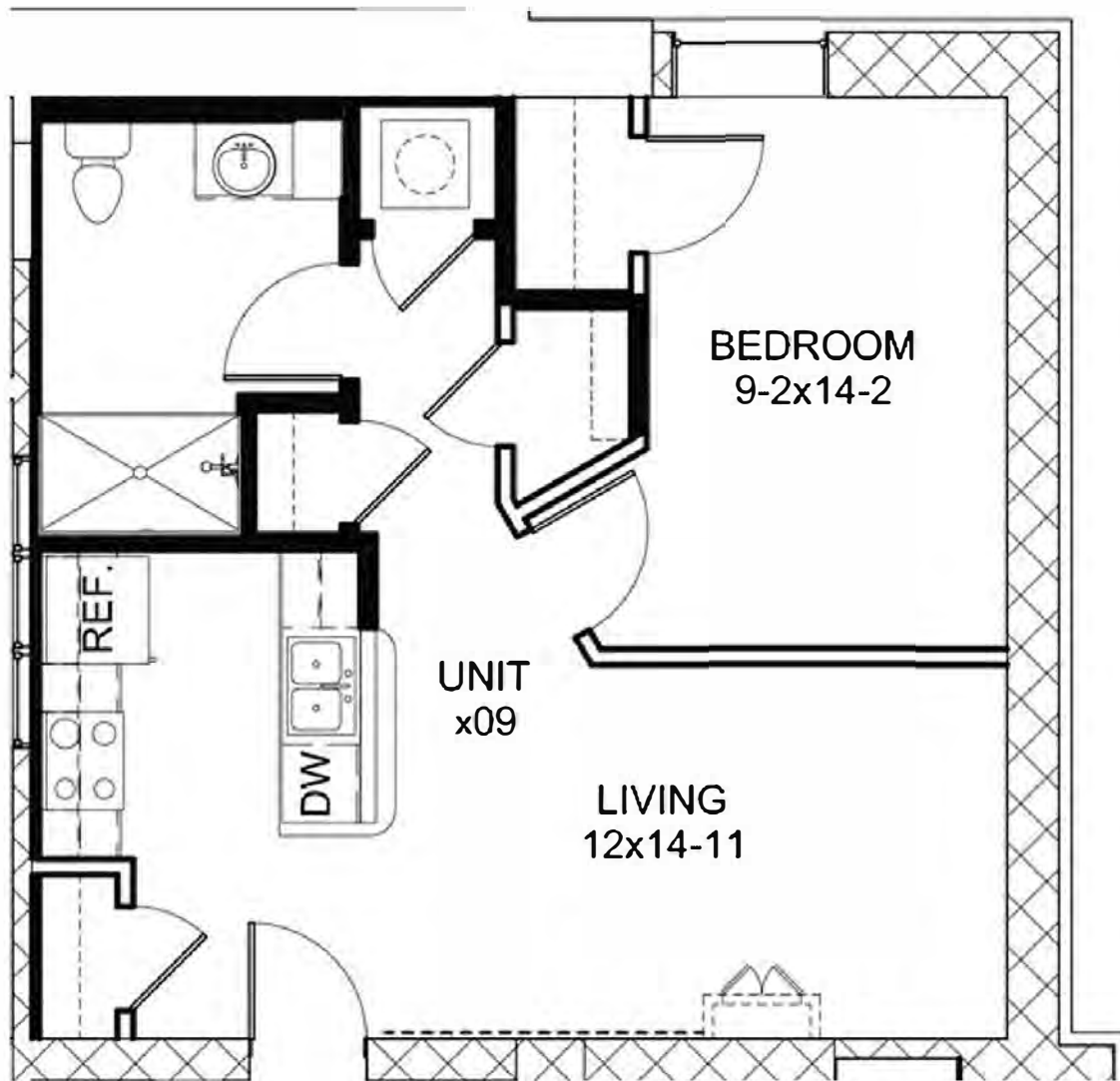
### Amenities:

Fitness Area | Laundry Room | Community Room | Onsite Leasing Office | High Ceilings and Wood Floors throughout | Community Garden | Wheel Chair Accessible Units Available | Stone Countertops | Ceiling Fans in the Bedrooms | Dishwasher | Intercom Entry System



1500 W. 10TH AVE  
DENVER, CO 80202  
303.733.1111  
WWW.FAXONAPARTMENTS.COM

UNIT 109 / 209 / 309  
1 BEDROOM + 1 BATH  
597 SF / 610 SF / 610 SF



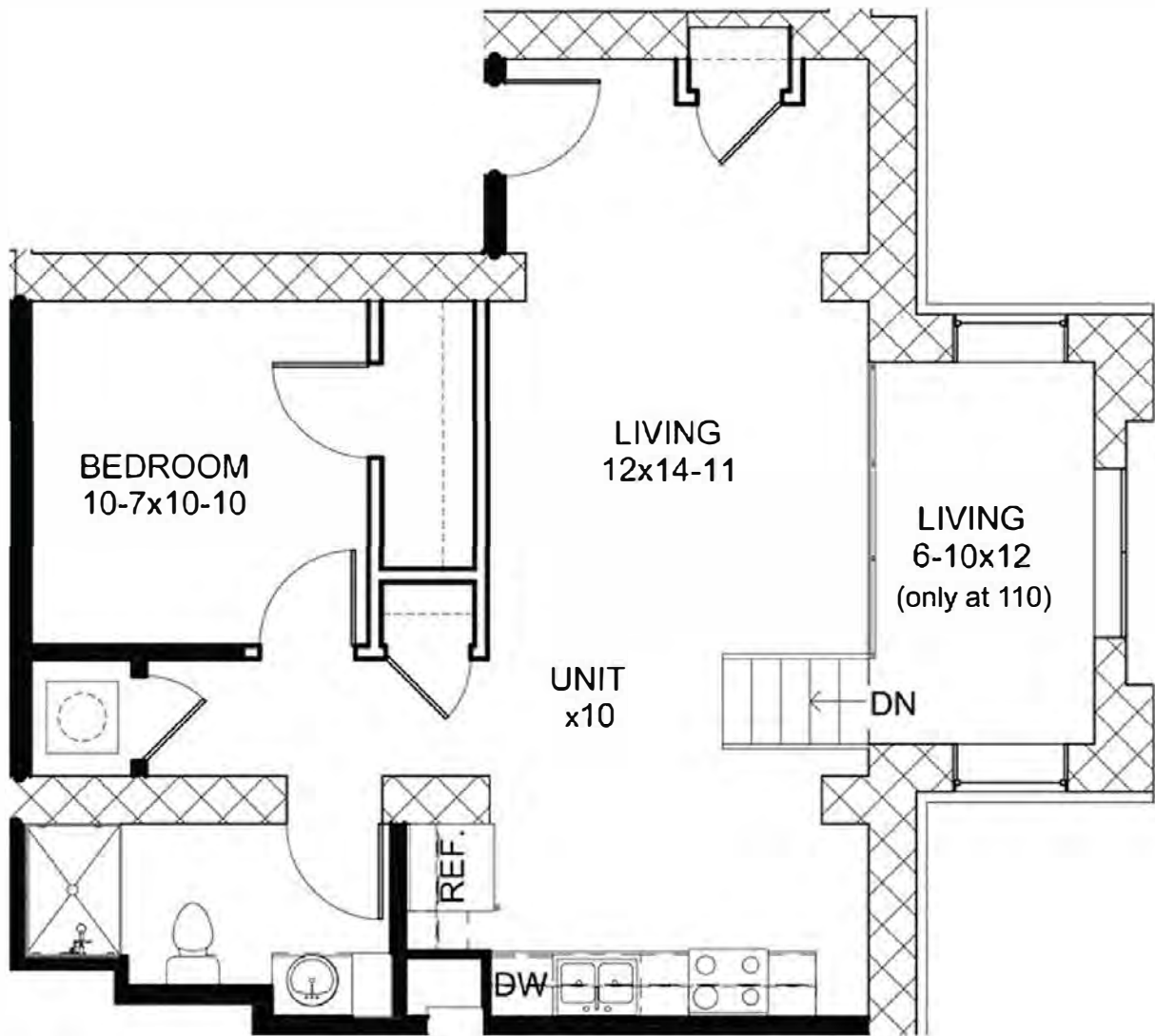
**Amenities:**

Fitness Area | Laundry Room | Community Room | Onsite Leasing Office | High Ceilings and Wood Floors throughout | Community Garden | Wheel Chair Accessible Units Available | Stone Countertops | Ceiling Fans in the Bedrooms | Dishwasher | Intercom Entry System



1100  
2100  
3100  
4100  
5100  
6100  
7100  
8100  
9100  
10100  
11100  
12100  
13100  
14100  
15100  
16100  
17100  
18100  
19100  
20100  
21100  
22100  
23100  
24100  
25100  
26100  
27100  
28100  
29100  
30100  
31100  
32100  
33100  
34100  
35100  
36100  
37100  
38100  
39100  
40100  
41100  
42100  
43100  
44100  
45100  
46100  
47100  
48100  
49100  
50100  
51100  
52100  
53100  
54100  
55100  
56100  
57100  
58100  
59100  
60100  
61100  
62100  
63100  
64100  
65100  
66100  
67100  
68100  
69100  
70100  
71100  
72100  
73100  
74100  
75100  
76100  
77100  
78100  
79100  
80100  
81100  
82100  
83100  
84100  
85100  
86100  
87100  
88100  
89100  
90100  
91100  
92100  
93100  
94100  
95100  
96100  
97100  
98100  
99100  
100100

UNIT 110 / 210 / 310  
1 BEDROOM + 1 BATH  
776 SF / 673 SF / 673 SF

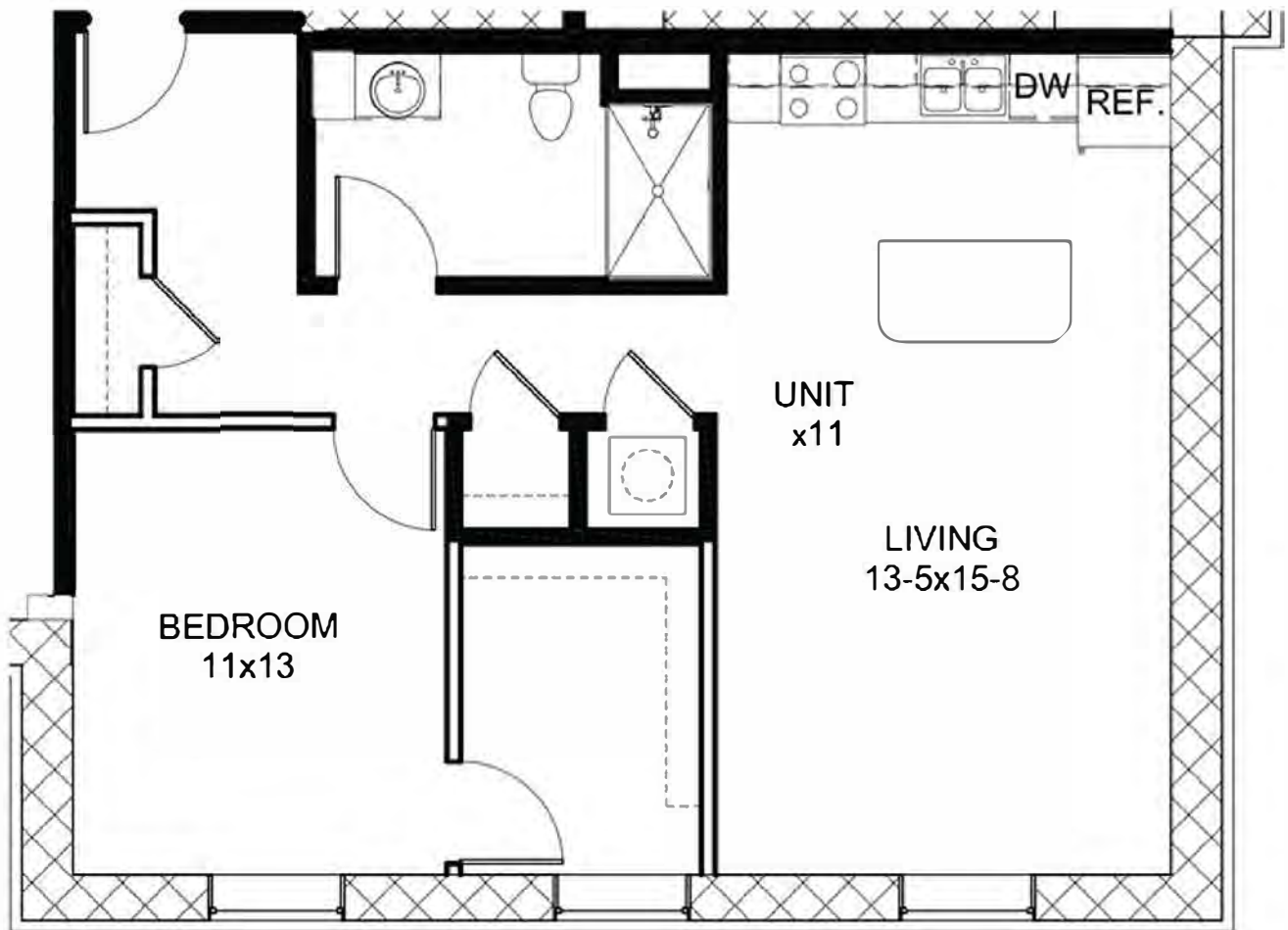


**Amenities:**

Fitness Area | Laundry Room | Community Room | Onsite Leasing Office | High Ceilings and Wood Floors throughout | Community Garden | Wheel Chair Accessible Units Available | Stone Countertops | Ceiling Fans in the Bedrooms | Dishwasher | Intercom Entry System



UNIT 111 / 211 / 311  
1 BEDROOM + 1 BATH  
792 SF / 749 SF / 749 SF



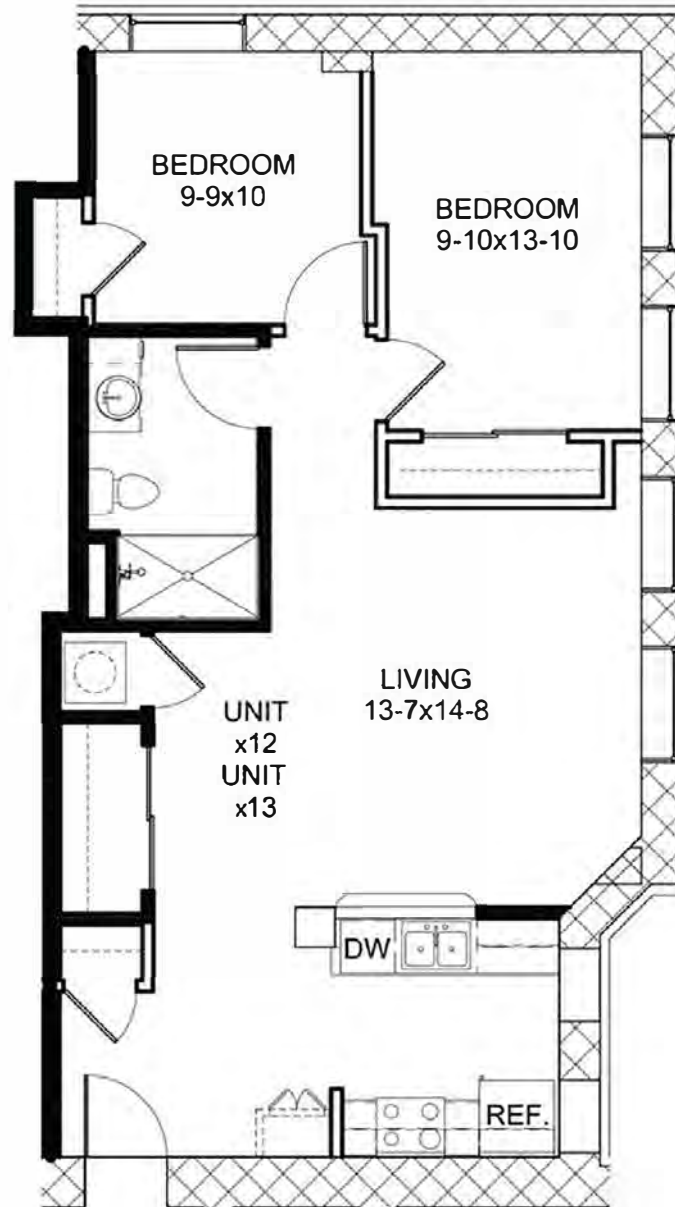
**Amenities:**

Fitness Area | Laundry Room | Community Room | Onsite Leasing Office | High Ceilings and Wood Floors throughout | Community Garden | Wheel Chair Accessible Units Available | Stone Countertops | Ceiling Fans in the Bedrooms | Dishwasher | Intercom Entry System



112 / 113 / 212 / 213  
2 BEDROOM + 1 BATH  
842 SF

UNIT 112 / 113 / 212 / 213  
2 BEDROOM + 1 BATH  
842 SF

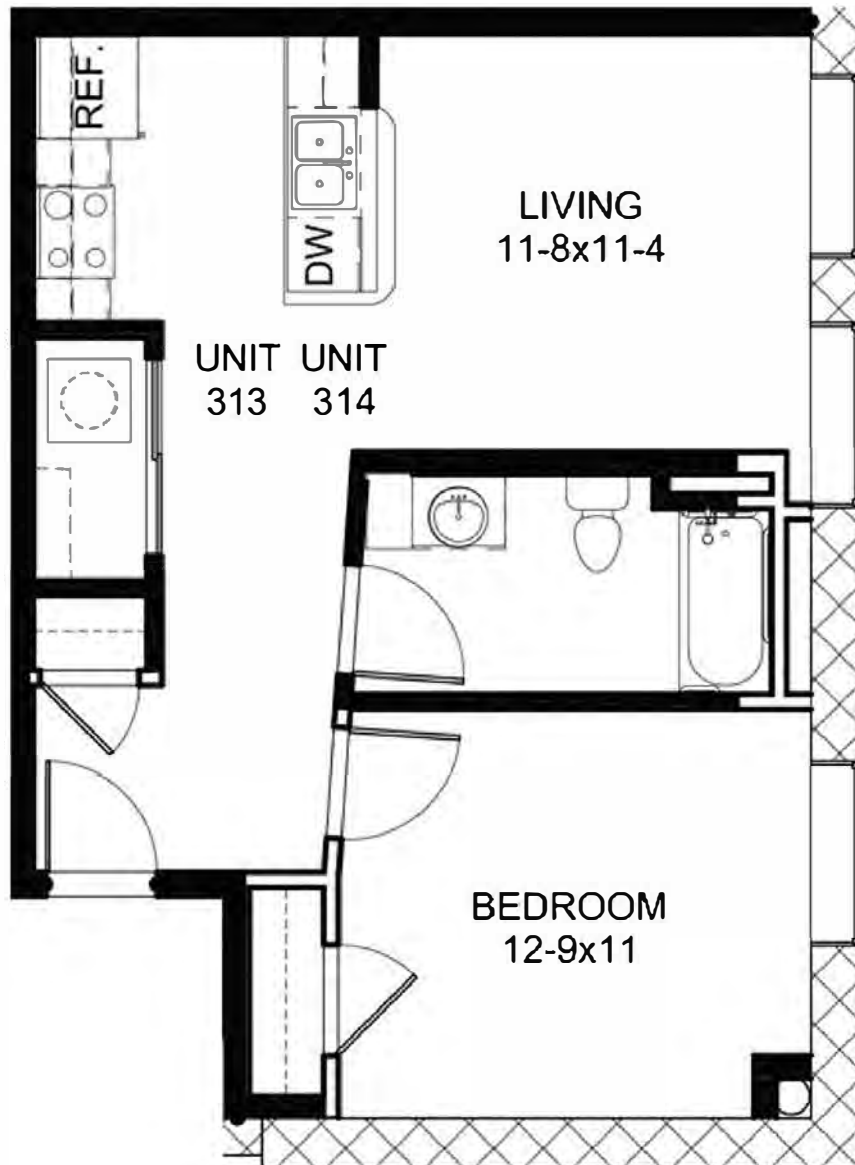


**Amenities:**

Fitness Area | Laundry Room | Community Room | Onsite Leasing Office | High Ceilings and Wood Floors throughout | Community Garden | Wheel Chair Accessible Units Available | Stone Countertops | Ceiling Fans in the Bedrooms | Dishwasher | Intercom Entry System



UNIT 313 / UNIT 314  
1 BEDROOM + 1 BATH  
618 SF / 583 SF

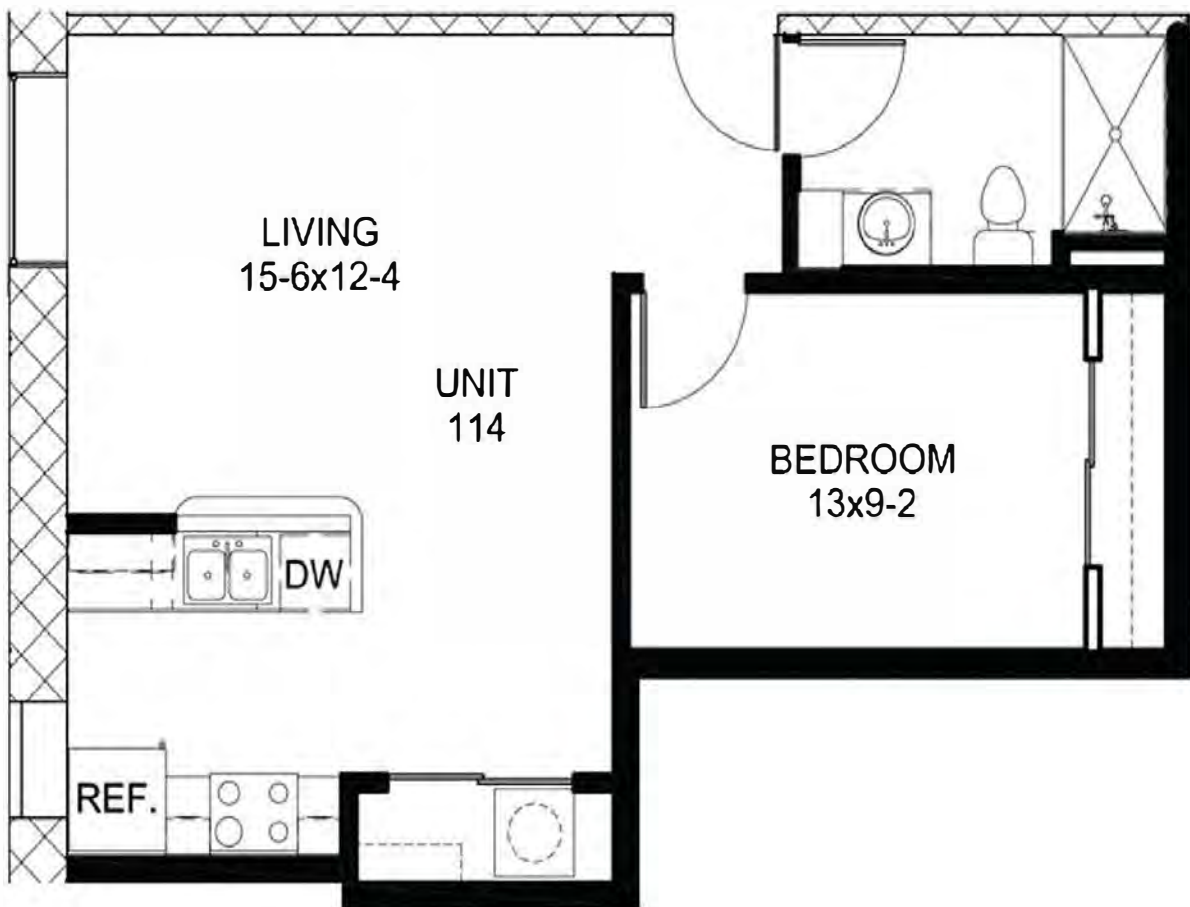


**Amenities:**

Fitness Area | Laundry Room | Community Room | Onsite Leasing Office | High Ceilings and Wood Floors throughout | Community Garden | Wheel Chair Accessible Units Available | Stone Countertops | Ceiling Fans in the Bedrooms | Dishwasher | Intercom Entry System



UNIT 114  
1 BEDROOM + 1 BATH  
593 SF



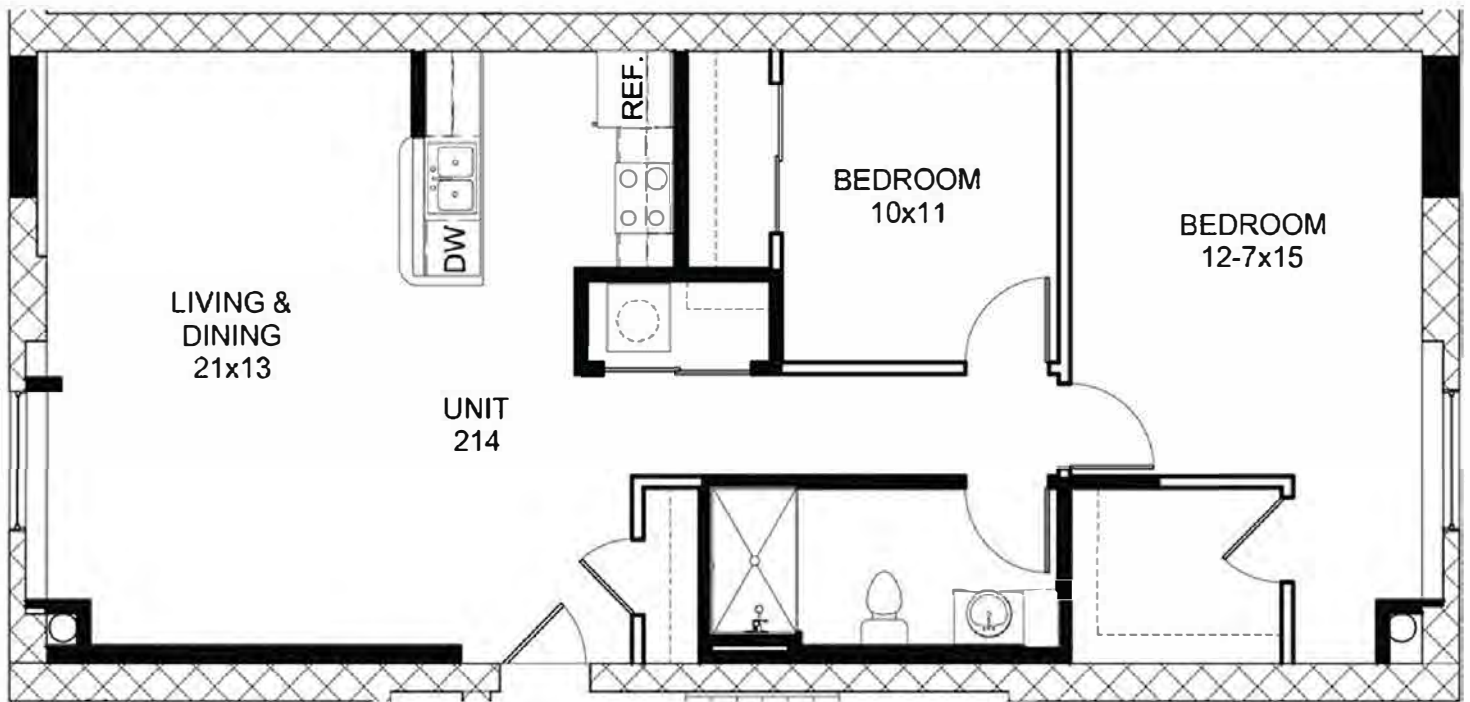
**Amenities:**

Fitness Area | Laundry Room | Community Room | Onsite Leasing Office | High Ceilings and Wood Floors throughout | Community Garden | Wheel Chair Accessible Units Available | Stone Countertops | Ceiling Fans in the Bedrooms | Dishwasher | Intercom Entry System





UNIT 214  
2 BEDROOM + 1 BATH  
1,069 SF

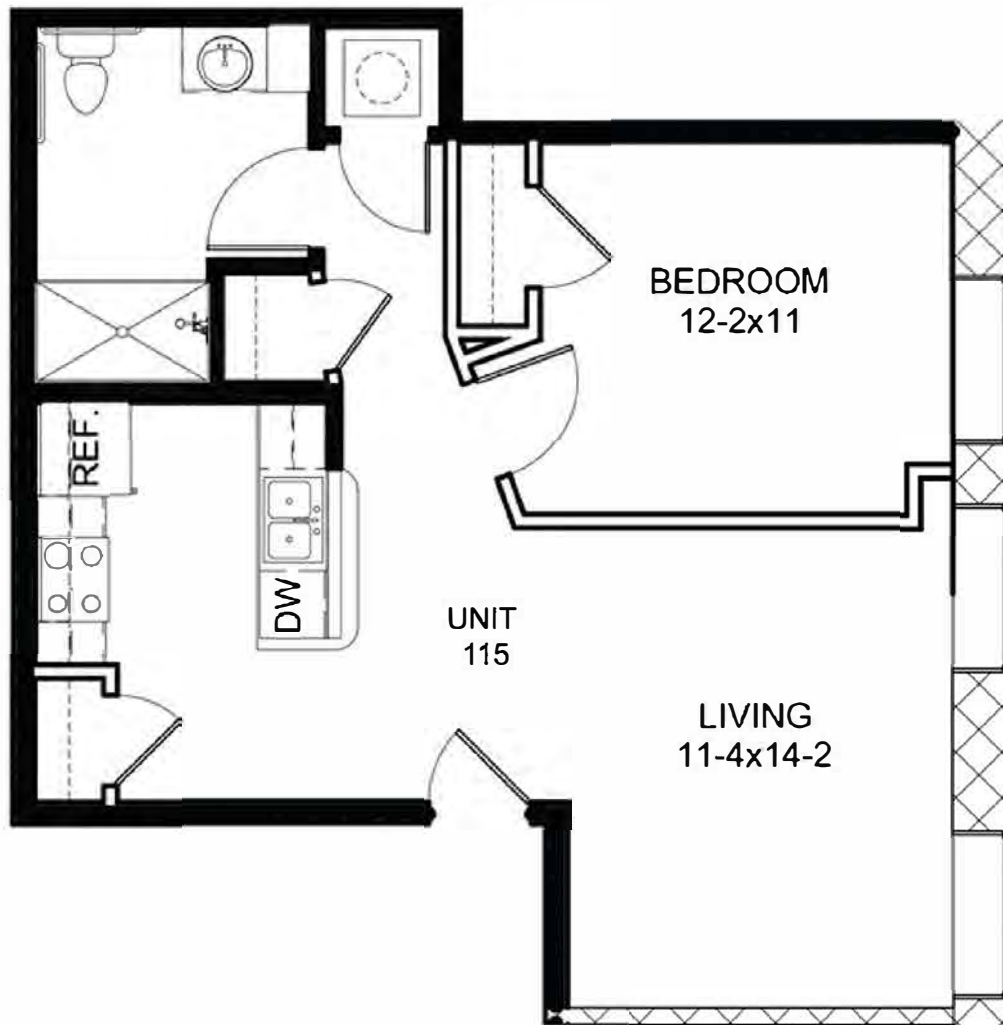


**Amenities:**

Fitness Area | Laundry Room | Community Room | Onsite Leasing Office | High Ceilings and Wood Floors throughout | Community Garden | Wheel Chair Accessible Units Available | Stone Countertops | Ceiling Fans in the Bedrooms | Dishwasher | Intercom Entry System



UNIT 115  
1 BEDROOM + 1 BATH  
647 SF

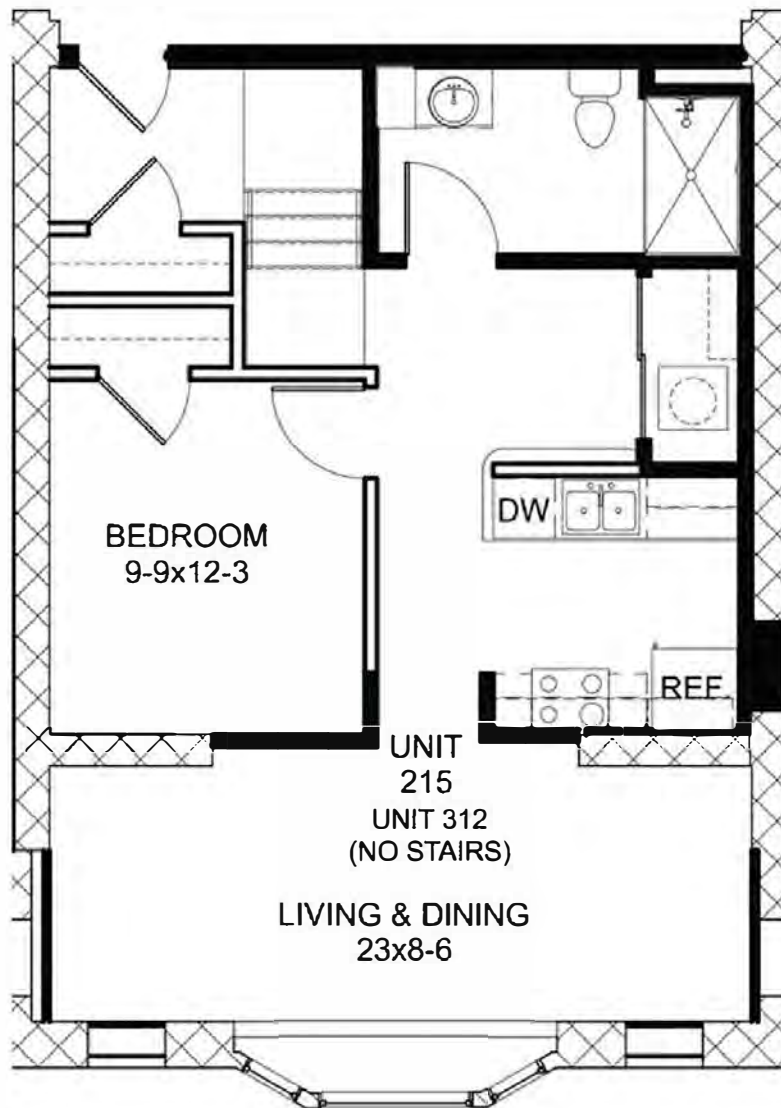


**Amenities:**

Fitness Area | Laundry Room | Community Room | Onsite Leasing Office | High Ceilings and Wood Floors throughout | Community Garden | Wheel Chair Accessible Units Available | Stone Countertops | Ceiling Fans in the Bedrooms | Dishwasher | Intercom Entry System



UNIT 215 / UNIT 312  
1 BEDROOM + 1 BATH  
710 SF



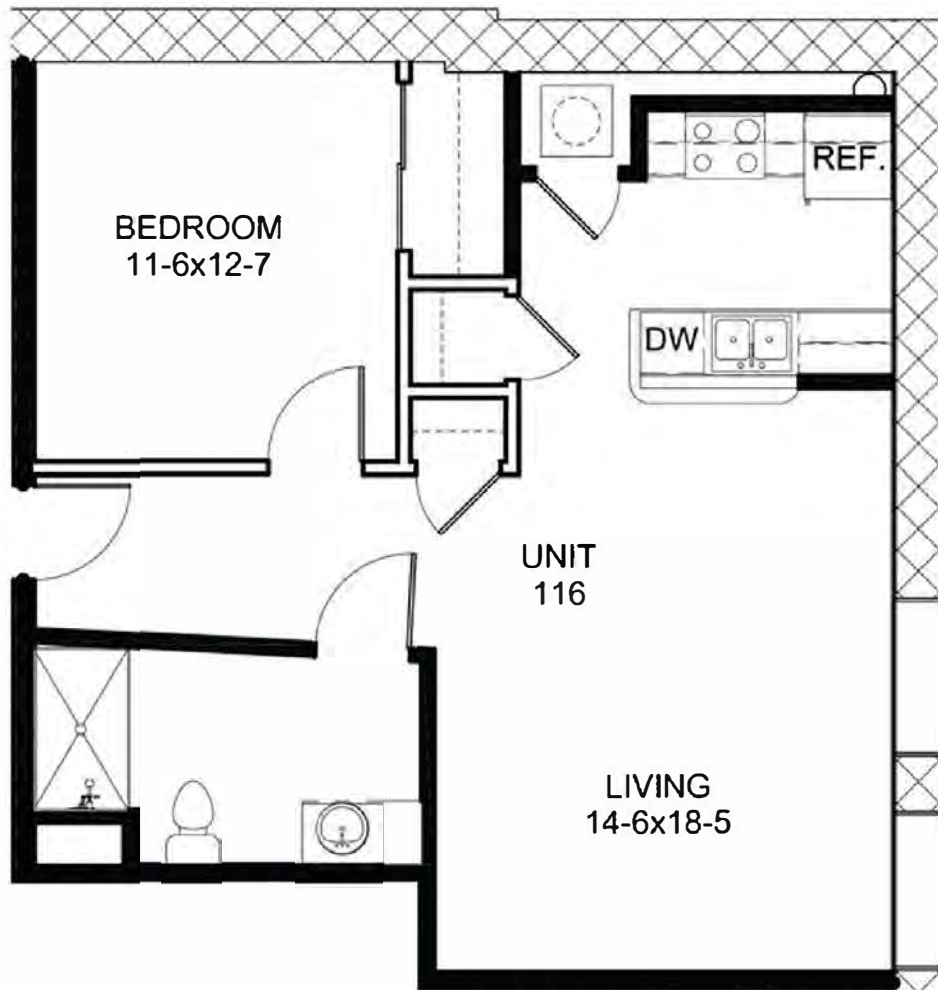
**Amenities:**

Fitness Area | Laundry Room | Community Room | Onsite Leasing Office | High Ceilings and Wood Floors throughout | Community Garden | Wheel Chair Accessible Units Available | Stone Countertops | Ceiling Fans in the Bedrooms | Dishwasher | Intercom Entry System



10500 107th  
SE  
Burien, WA 98148  
206.835.8000  
www.faxonapartments.com

UNIT 116  
1 BEDROOM + 1 BATH  
738 SF

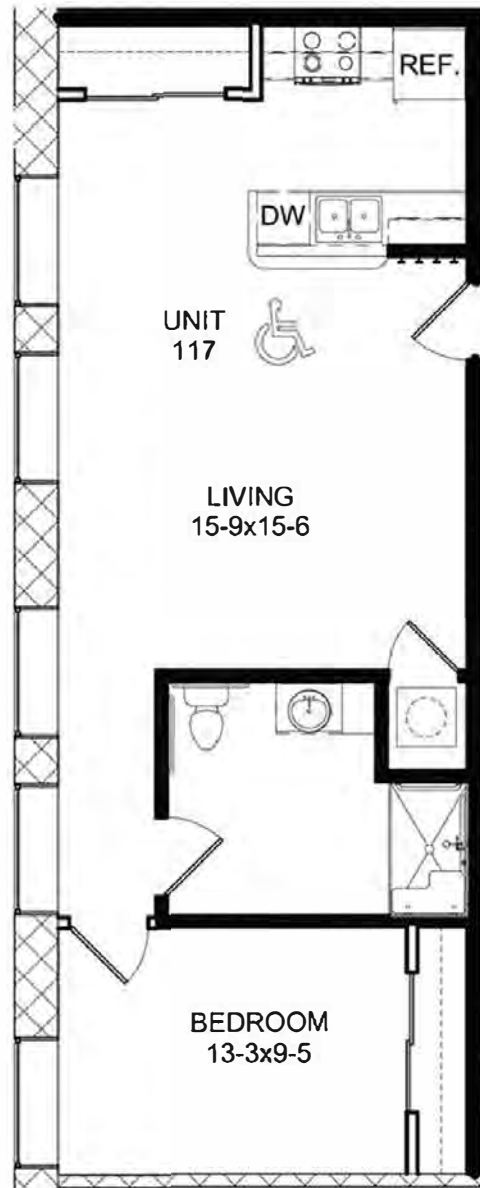


**Amenities:**

Fitness Area | Laundry Room | Community Room | Onsite Leasing Office | High Ceilings and Wood Floors throughout | Community Garden | Wheel Chair Accessible Units Available | Stone Countertops | Ceiling Fans in the Bedrooms | Dishwasher | Intercom Entry System



UNIT 117  
1 BEDROOM + 1 BATH  
685 SF



### Amenities:

Fitness Area | Laundry Room | Community Room | Onsite Leasing Office | High Ceilings and Wood Floors throughout | Community Garden | Wheel Chair Accessible Units Available | Stone Countertops | Ceiling Fans in the Bedrooms | Dishwasher | Intercom Entry System